

Overview of Tuna Fisheries in the Western and Central Pacific Ocean, Including Economic Conditions - 2024

SC21-2025 / ST-GN-01

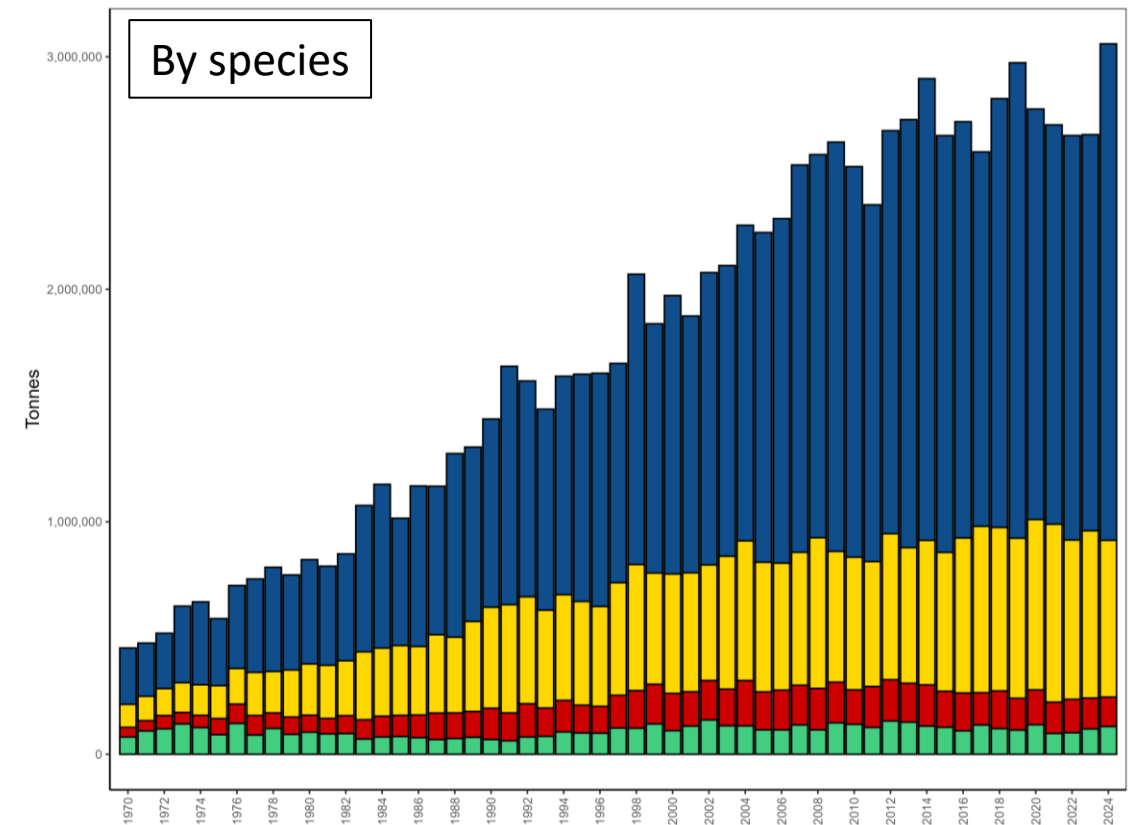
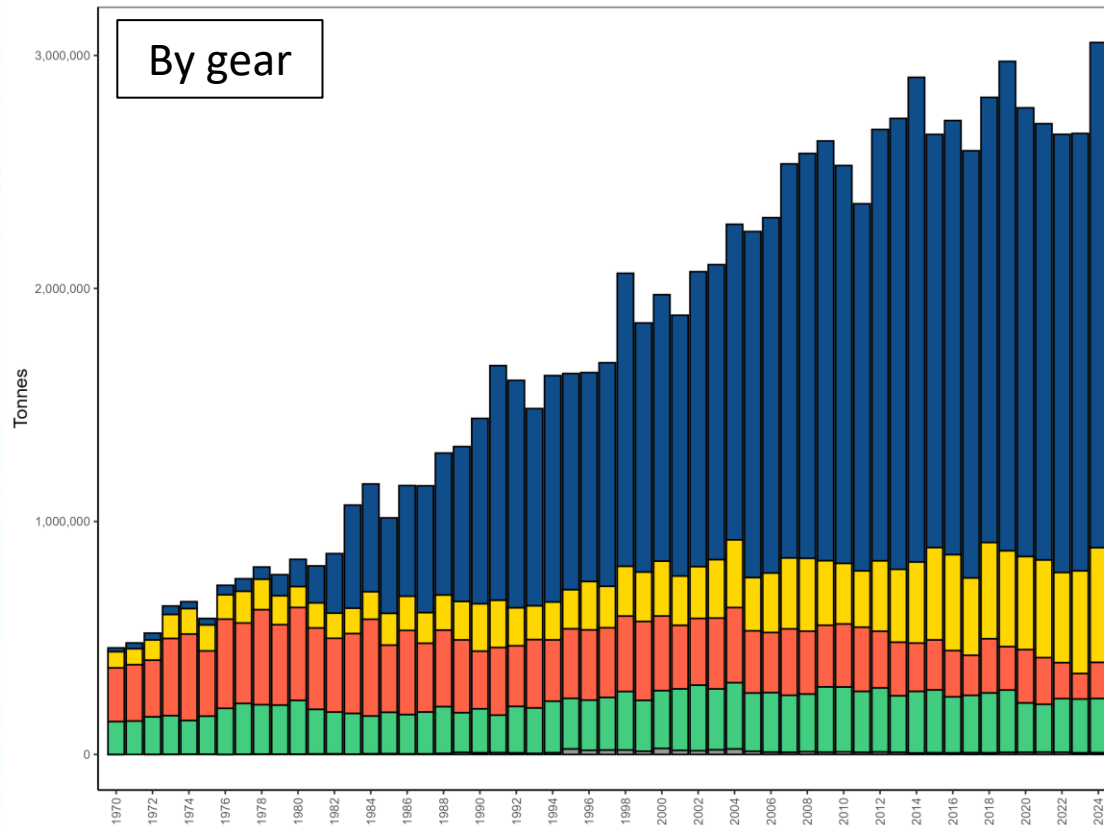
Tiffany Vidal¹ and Thomas Ruaia²

¹ SPC-OFP

² FFA

SCIENTIFIC COMMITTEE
TWENTY-FIRST REGULAR SESSION
Nuku'alofa, Tonga
13–21 August 2025

WCPFC Tuna Catches (~3 mill mt in 2024)



- PS – 2,148,963 (71%)
- PL – 154,612 (5%)
- LL – 231,704 (9%)
- OTH – 488,870 (16%)

- SKJ – 2,107,666 (70%)
- YFT – 677,594 (22%)
- BET – 119,023 (4%)
- ALB – 119,867 (4%)

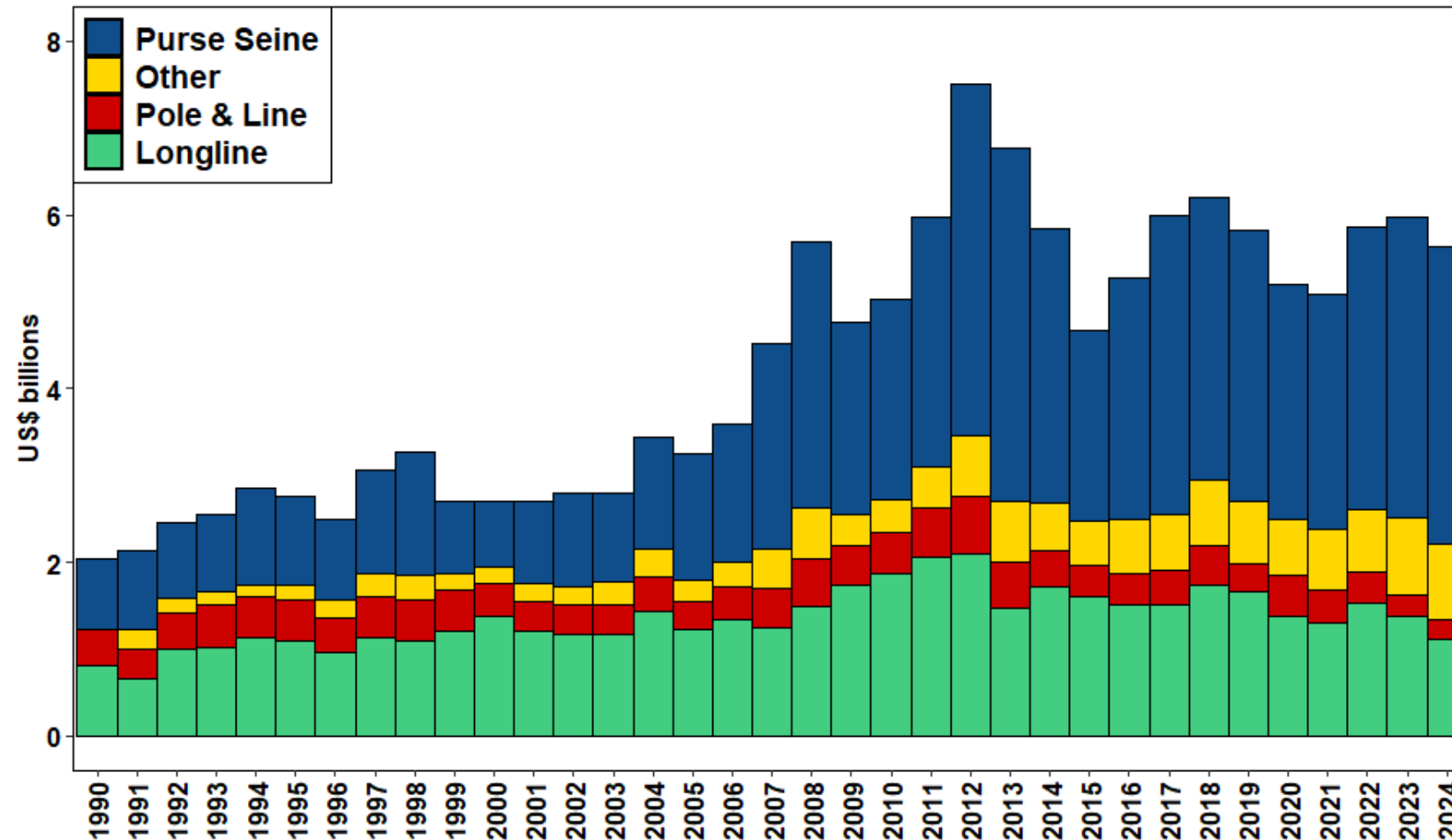
WCPFC Tuna Catch Value by Gear



Western and
Central Pacific
Fisheries
Commission



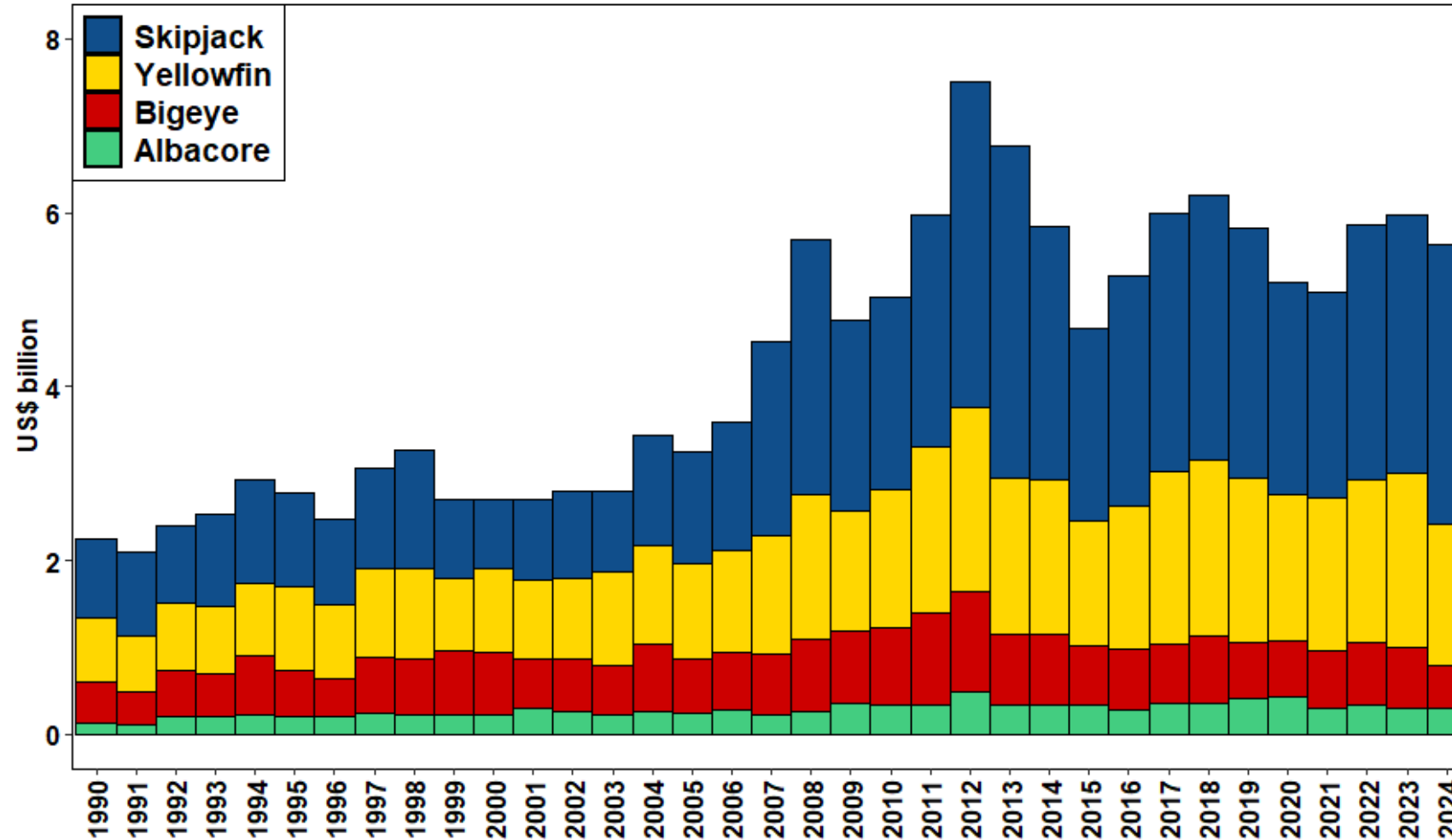
Pacific
Community
Communauté
du Pacifique



2024 Estimates (billions)

- Total Catch: \$5.6 (-6%)
- Purse seine: \$3.4 (-1%) – 61% value
- Longline: \$1.1 (-20%) – 20% value
- Pole-and-line: \$0. 23 (-11%) – 4% value
- Other: \$0.88 (-0.5%) – 16% value

WCPFC Tuna Catch Value by Species



2024 Estimates (billions)

- SKJ: \$3.21 (+8%) – 57% value
- YFT: \$1.62 (-20%) – 29% value
- BET: \$0.51 (-26%) – 9% value
- ALB: \$0.29 (-5%) – 5% value

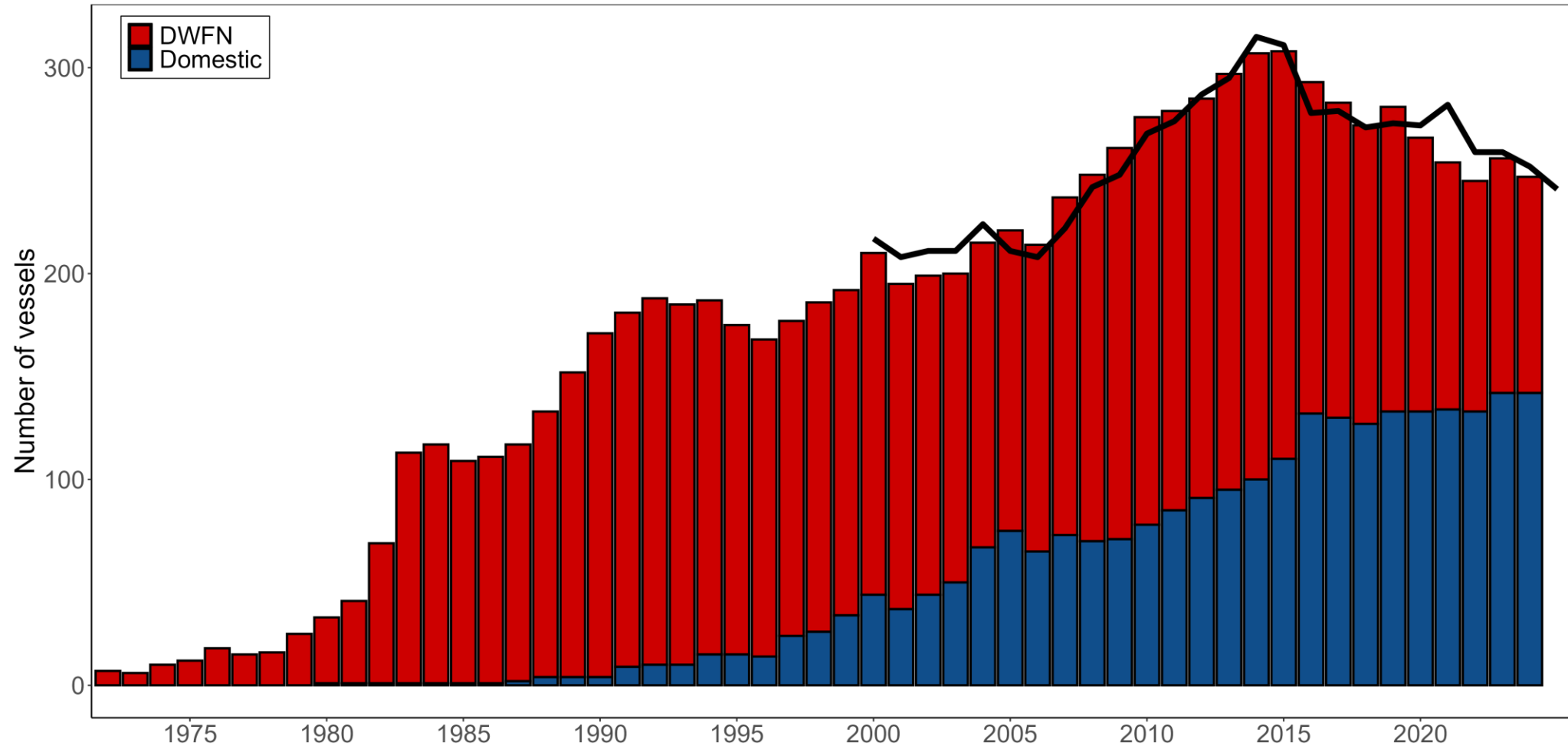
WCPFC Purse Seine Fishery



Western and
Central Pacific
Fisheries
Commission



Pacific
Community
Communauté
du Pacifique



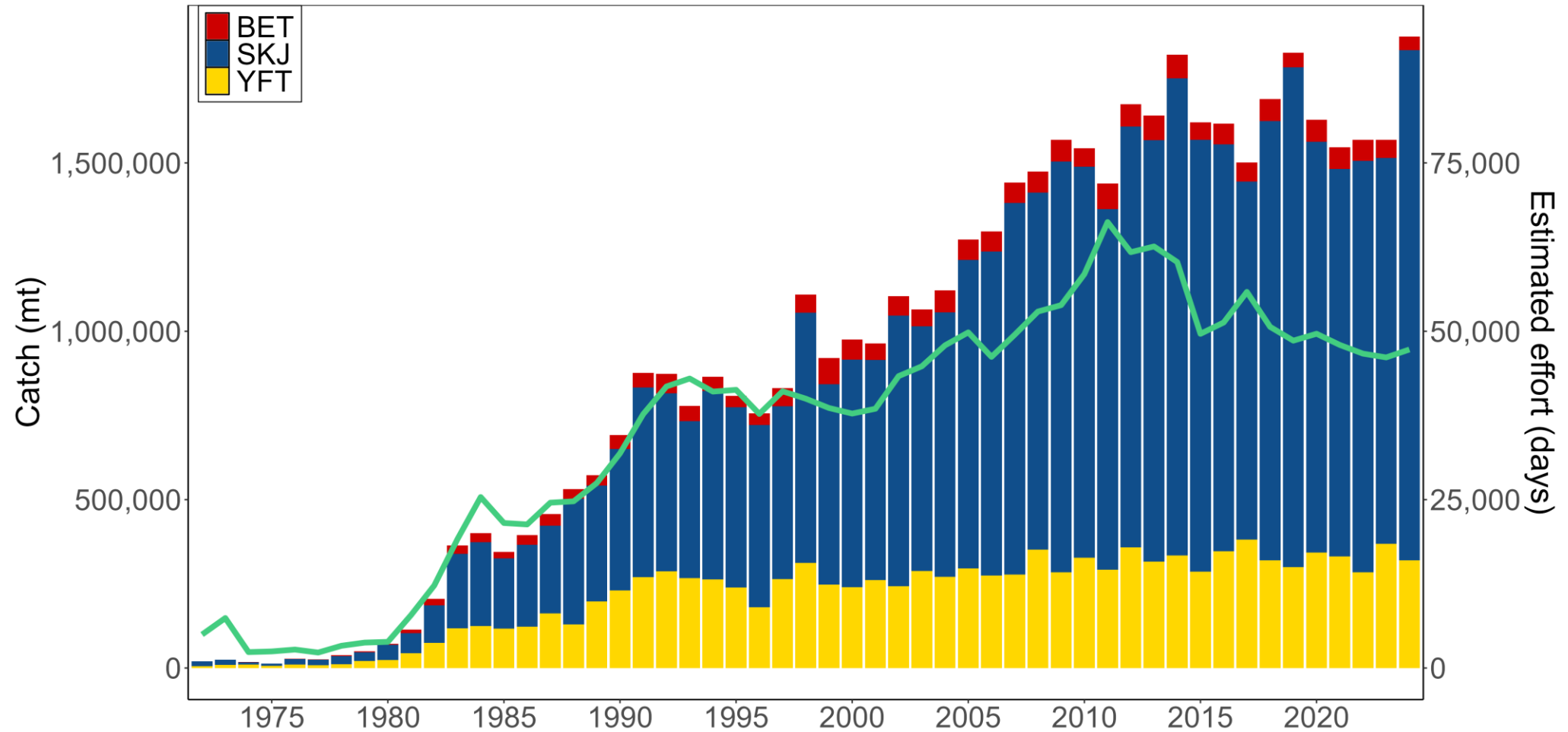
WCPFC Purse Seine Fishery



Western and
Central Pacific
Fisheries
Commission



Pacific
Community
Communauté
du Pacifique



WCPFC Purse Seine Fishery

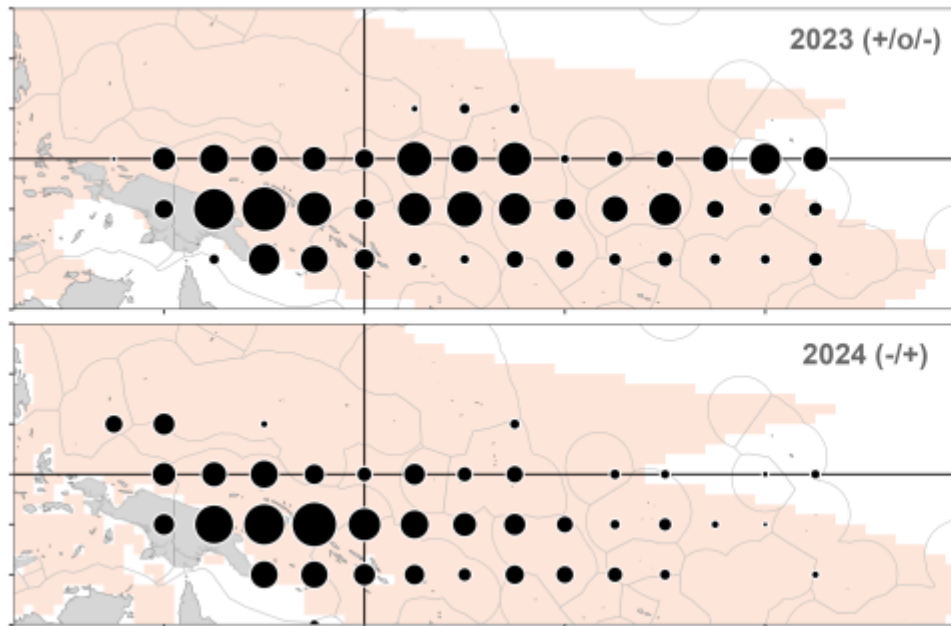


Western and
Central Pacific
Fisheries
Commission

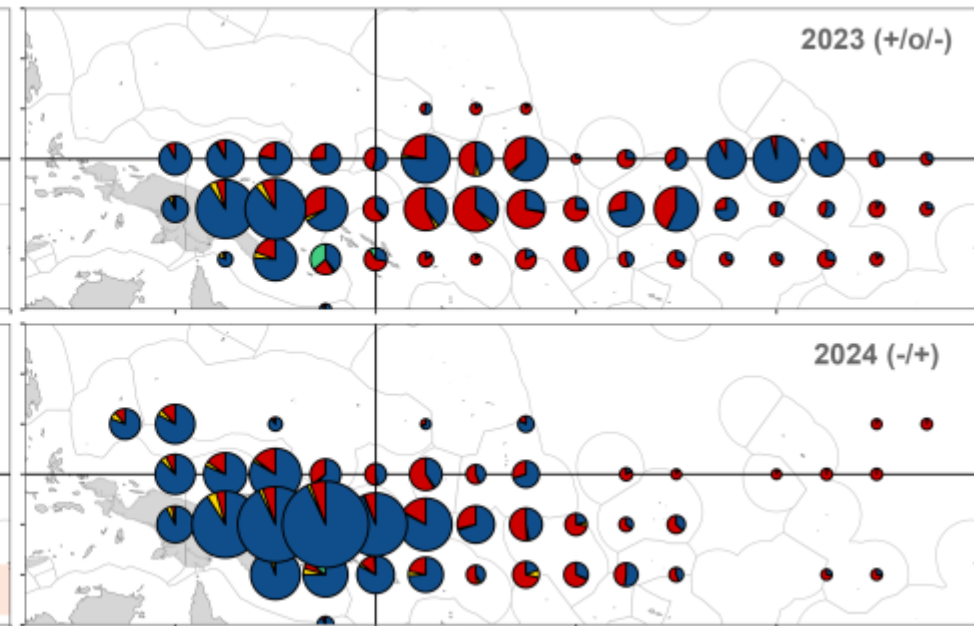


Pacific
Community
Communauté
du Pacifique

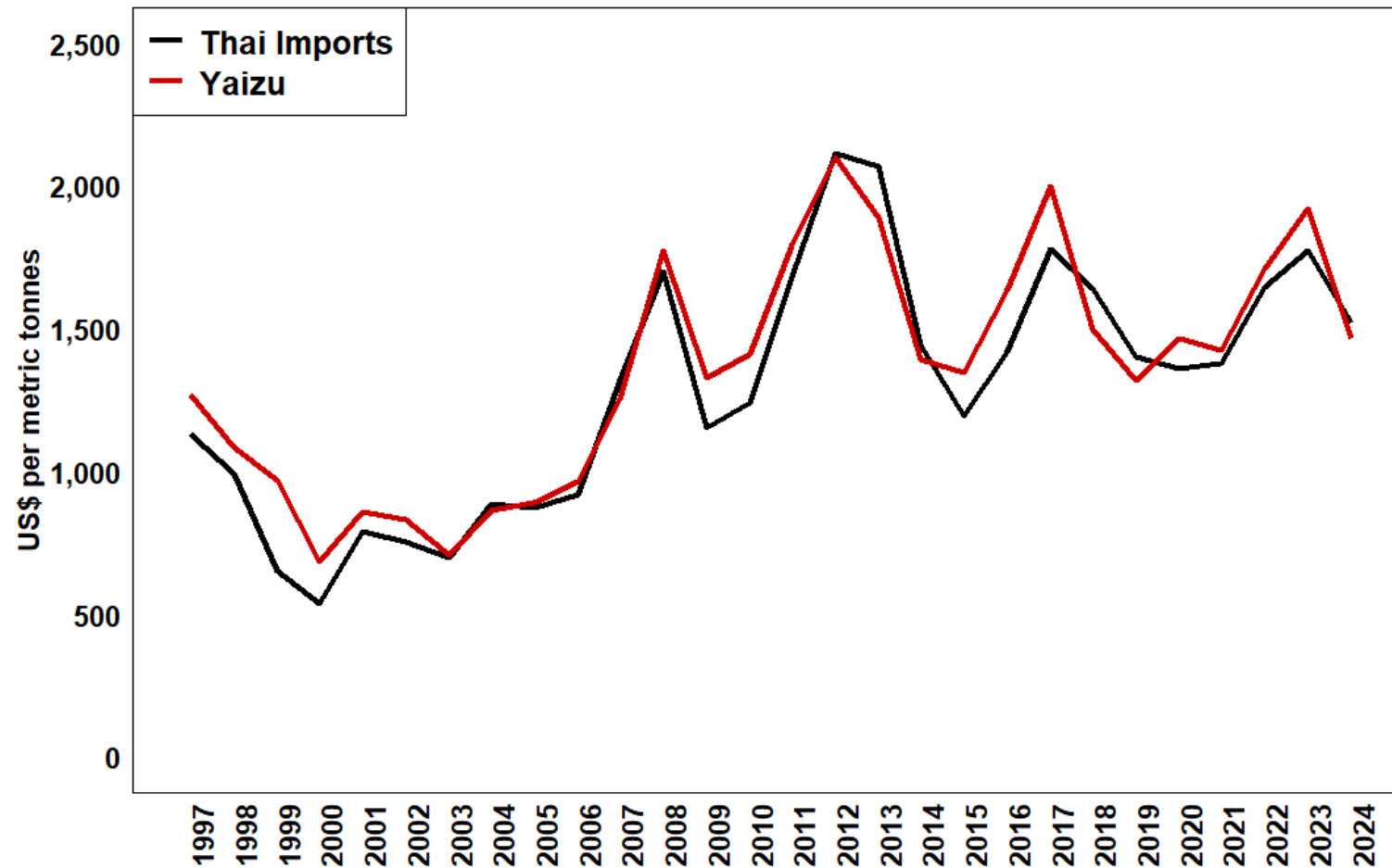
Days



Sets



Purse Seine-caught tuna skipjack price



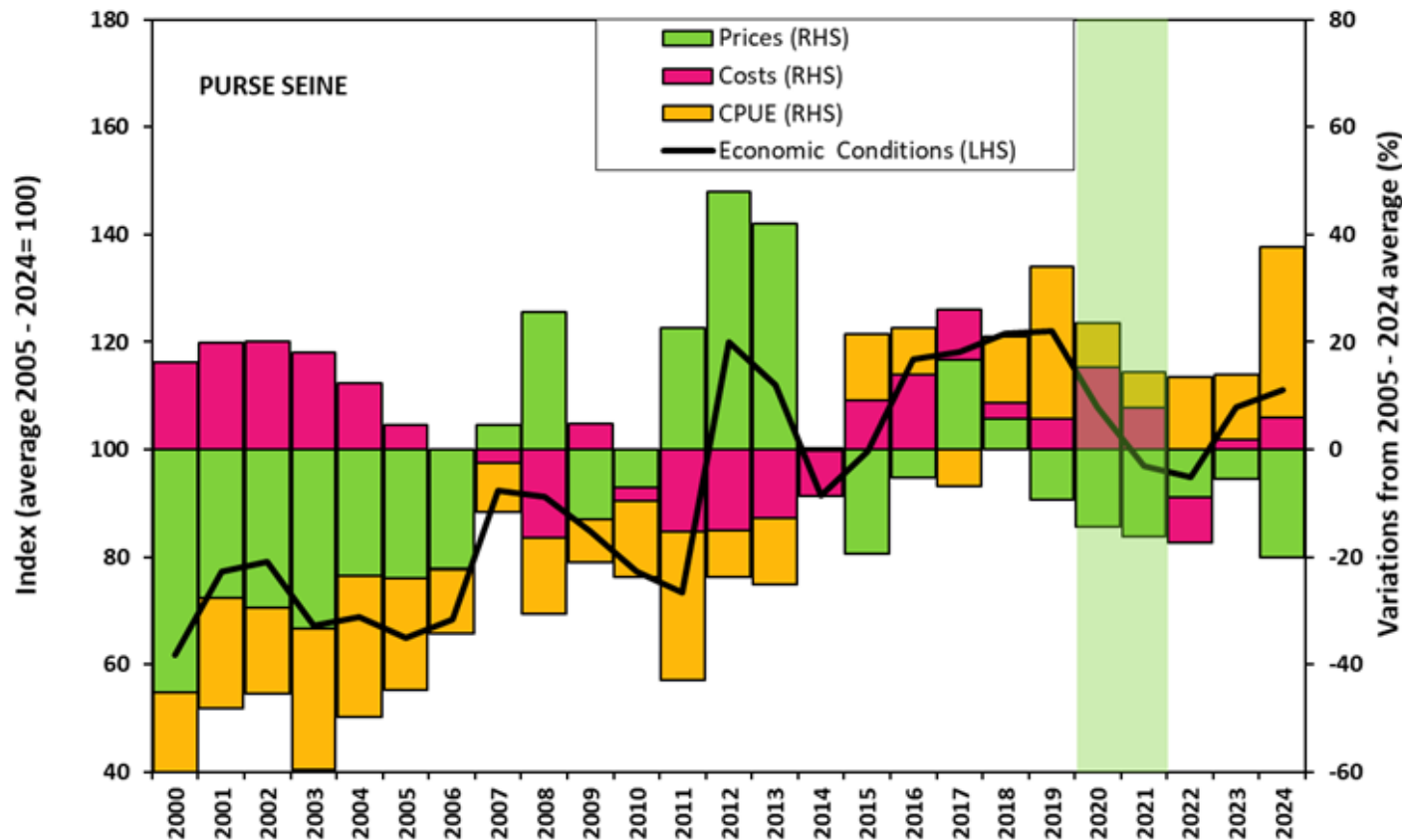
Thai Import Skipjack Price 2024

- US\$ \$1,523/mt (-14%) from 2023.

Yaizu Skipjack Price 2024

- US\$ \$1,466/mt (-24%) from 2023.

Purse Seine – Economic Conditions



PURSE SEINE ECONOMIC CONDITIONS INDEX

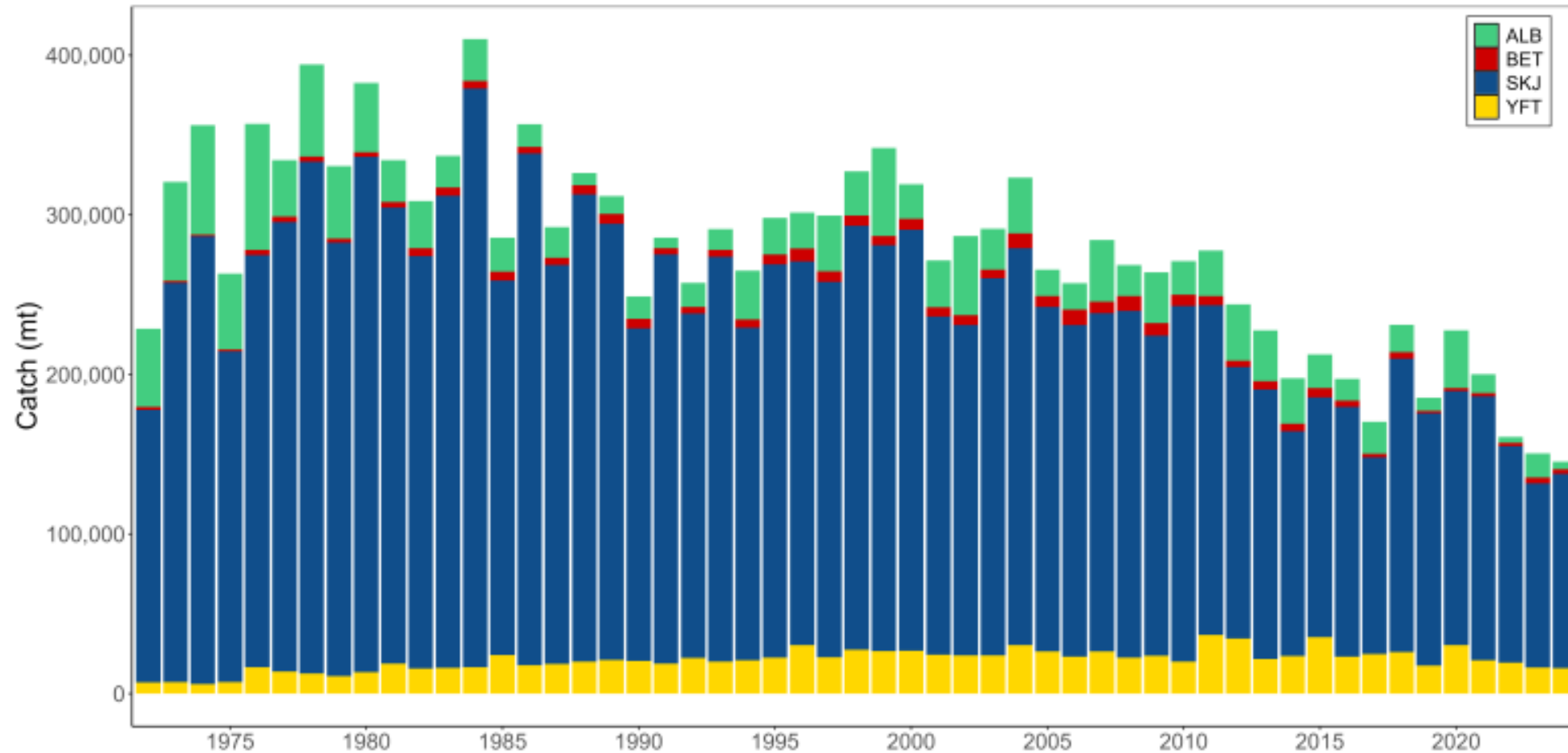
Note: Caveat: 2020-21, the impact of COVID-19 pandemic on the cost structure may have been underestimated.

In 2024, economic conditions reached 111- well above average - driven by high CPUE and declining fuel costs.

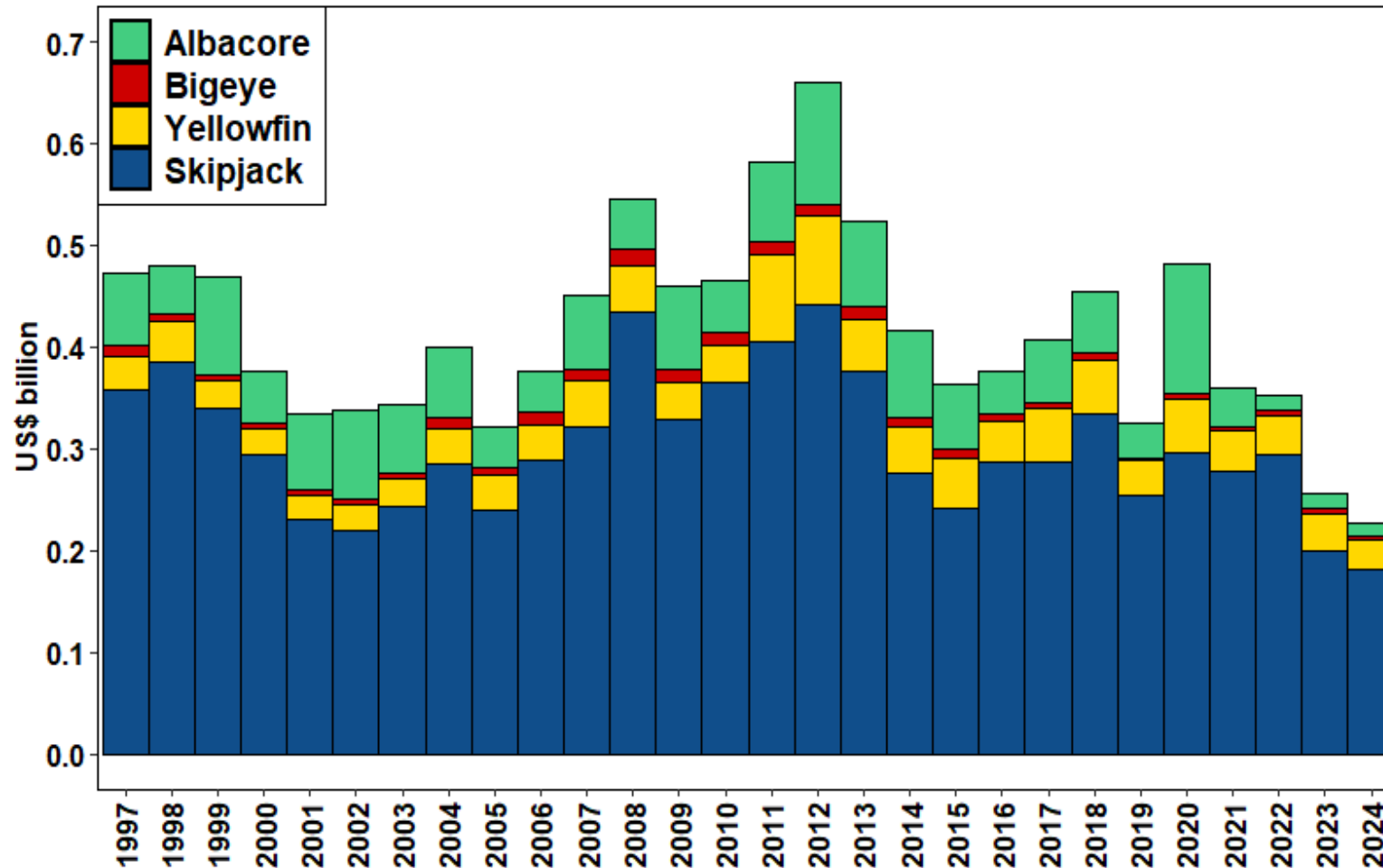
Recent years 2018-2023, conditions driven by high CPUE

- In 2022, the index was below average due to a sharp increase in fuel costs, exacerbated by the Russia–Ukraine conflict

Pole-and-Line Catch



Pole-and-Line Catch Value

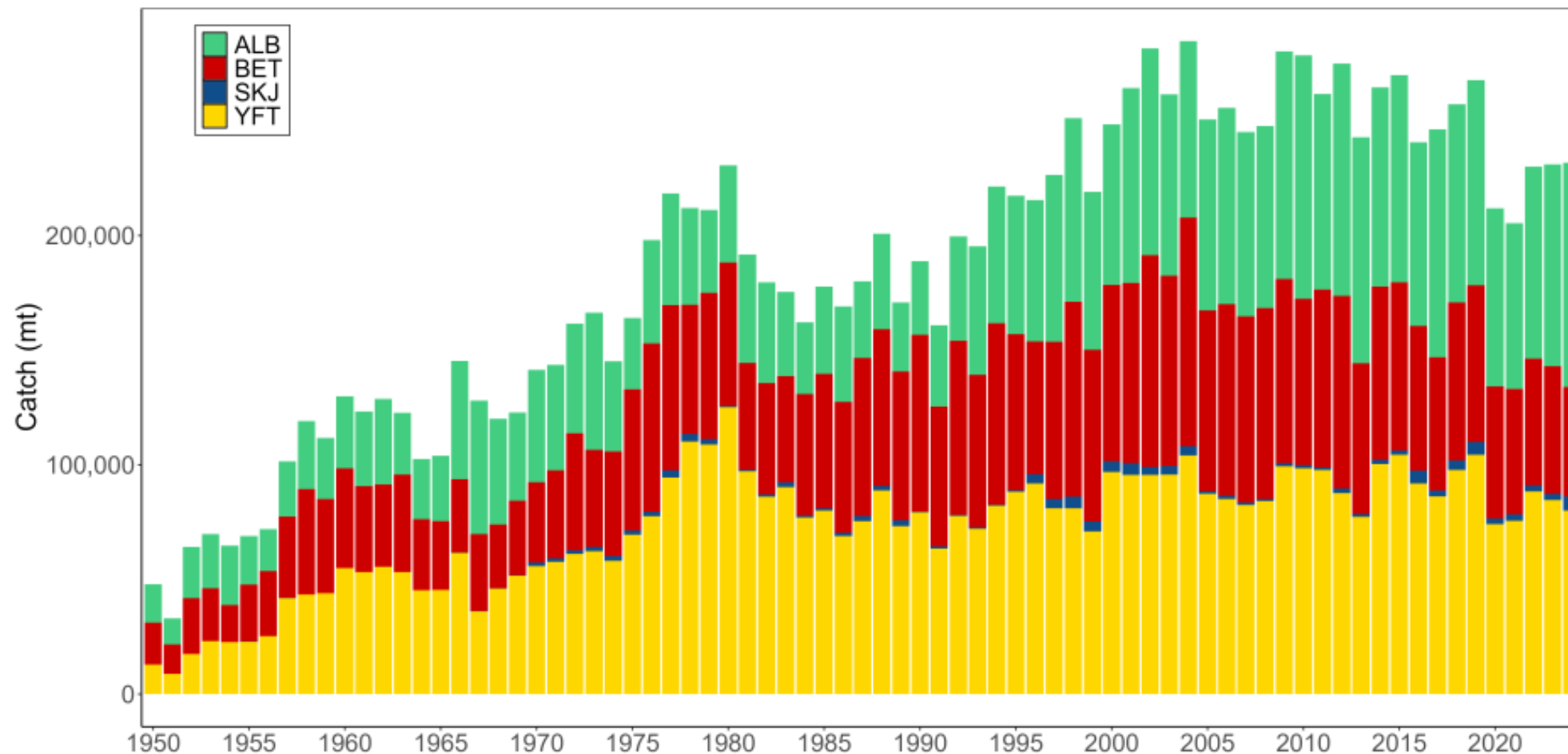


2024

Total value \$227m

- down 11% primarily due to a 30% drop in Yaizu prices for pole-and-line caught skipjack.
- Value of skipjack down 9% (\$18 million) to \$182 million – 80% of total value.
- Value of yellowfin, bigeye and albacore- down 23%,14% and 11% respectively.

Longline Catch



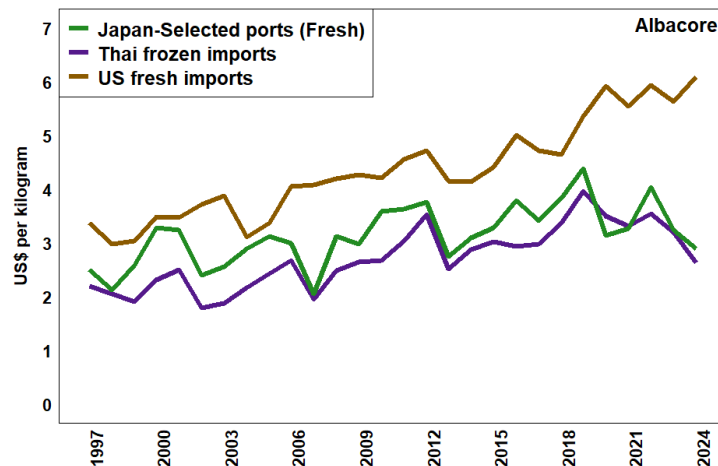
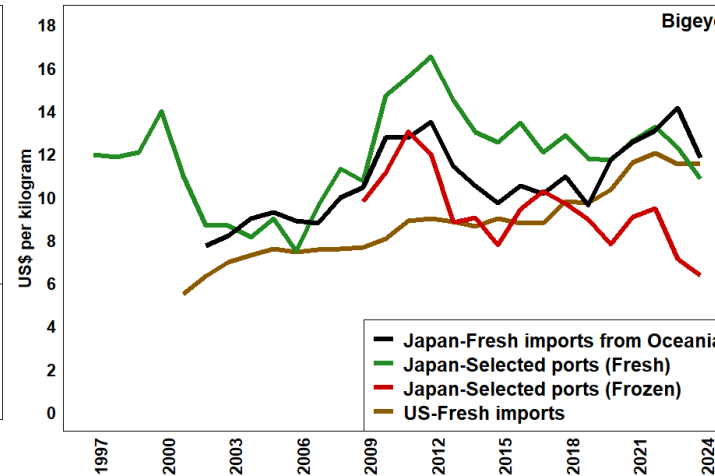
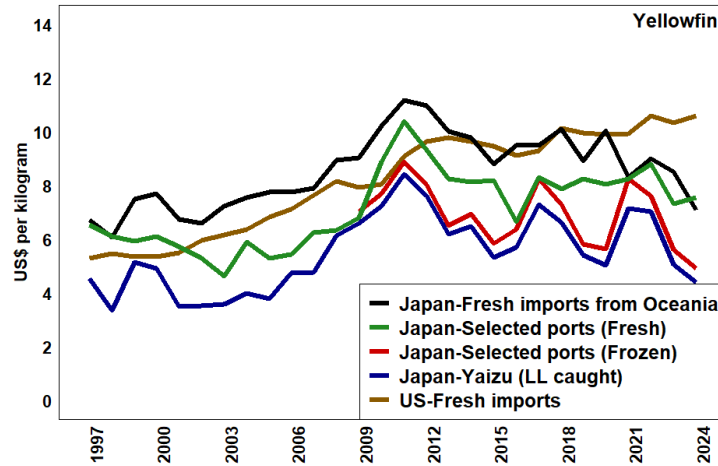
Longline-caught tuna price



Western and
Central Pacific
Fisheries
Commission



Pacific
Community
Communauté
du Pacifique



❖ Yellowfin 2024

- In USD terms: JP prices ↓ across major markets, except ↑ for fresh product from selected Japanese ports
- However, US fresh import price ↑ to \$10.58/kg vs previous year.

❖ Bigeye 2024

- In USD terms: JP prices ↓ across major markets.
- However, US fresh import price ↑ to \$11.57/kg vs previous year.

❖ Albacore 2024

- In USD terms: Thai frozen import and selected Japanese ports fresh prices ↓.
- However, US fresh import price ↑ (8%) to a record high \$6.10/kg.

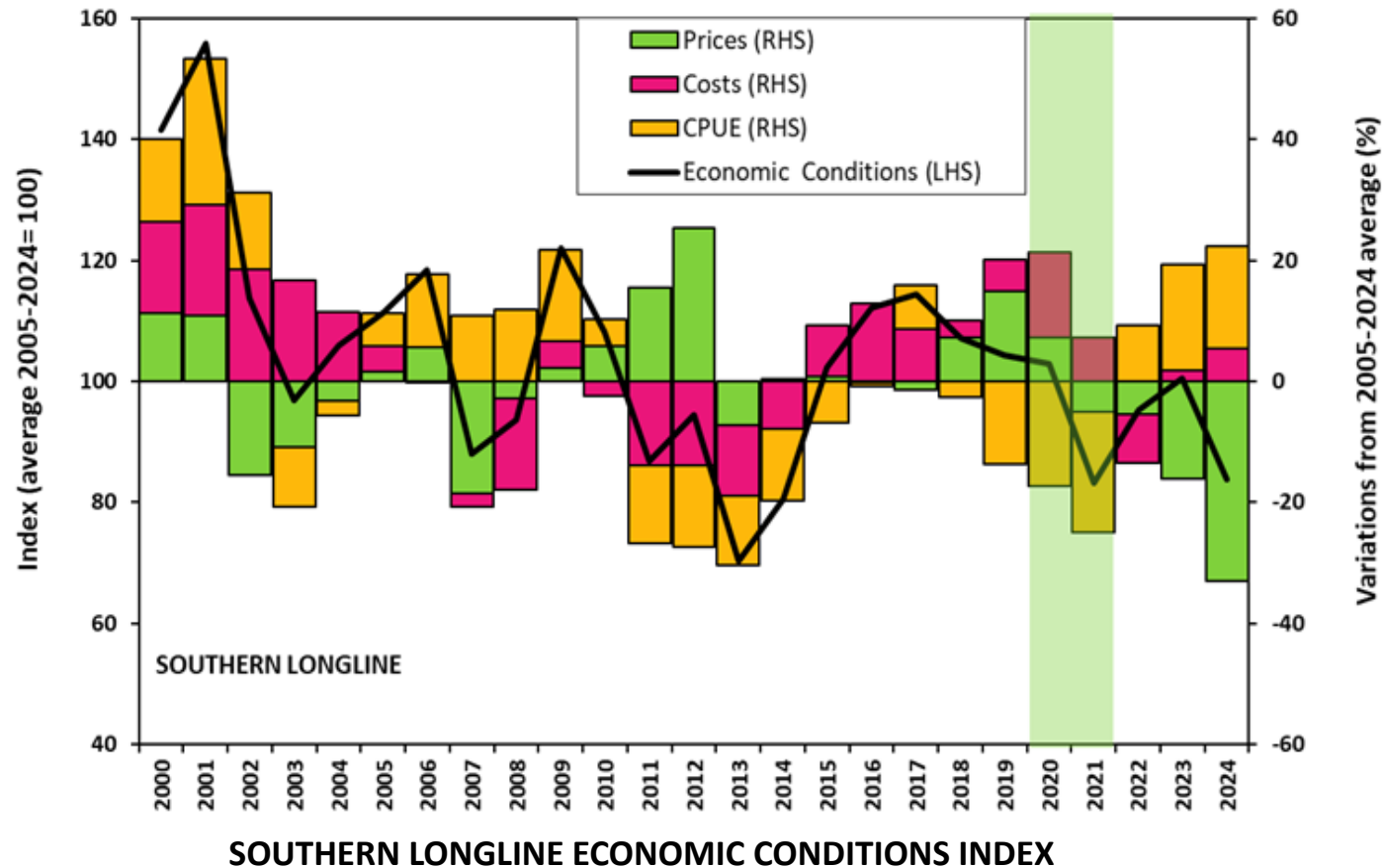
Southern Longline – Economic Conditions



Western and
Central Pacific
Fisheries
Commission



Pacific
Community
Communauté
du Pacifique



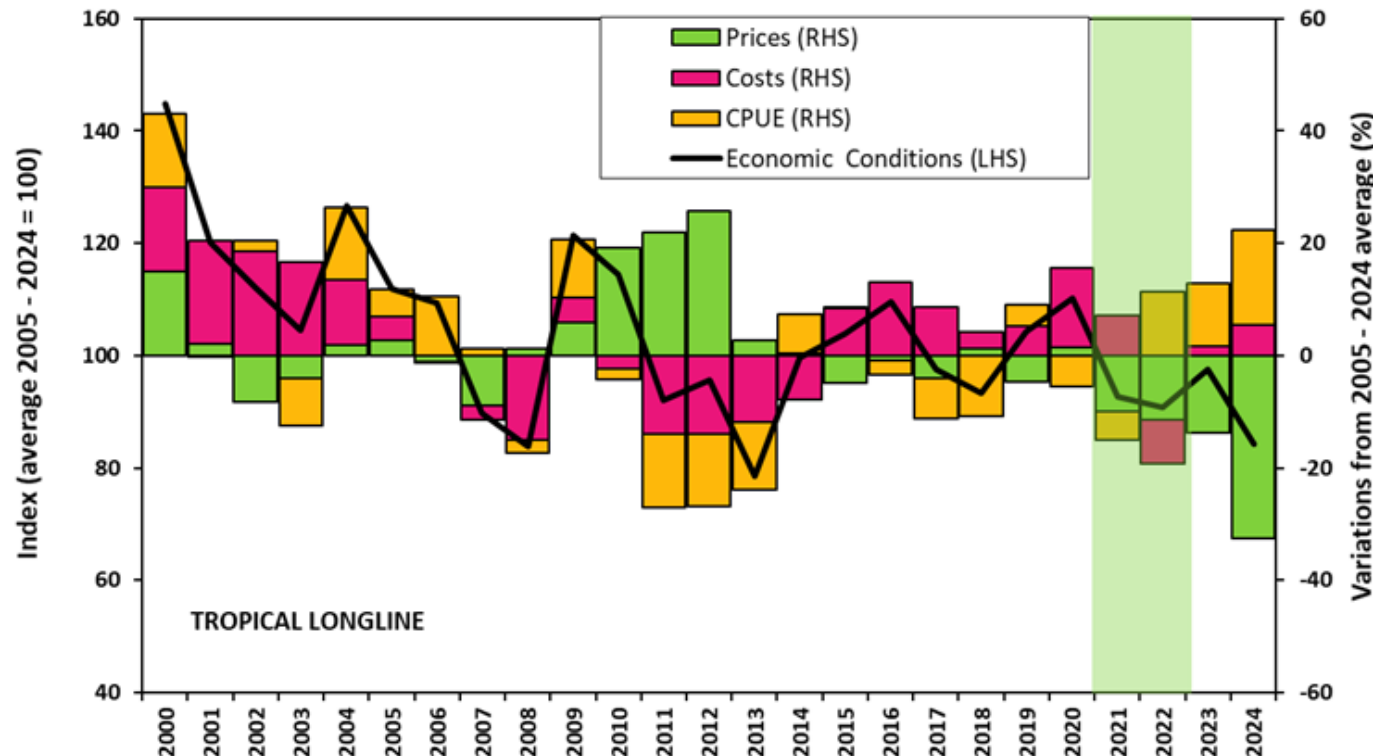
Note: Caveat: 2020-21, the impact of COVID-19 pandemic on the cost structure may have been underestimated.

In 2024, economic conditions below its 20-year average, primarily due to a decline in fish prices despite high catch rates and declining fuel costs

Recent years

- 2018-2019, conditions driven by high prices
- 2020-2021 conditions worsened due to low CPUE- in part due to COVID-19.
- 2022, conditions improved due to increase in CPUE.
- 2023, conditions driven by high CPUE and declining fuel costs.

Tropical Longline – Economic Conditions



TROPICAL LONGLINE ECONOMIC CONDITIONS INDEX

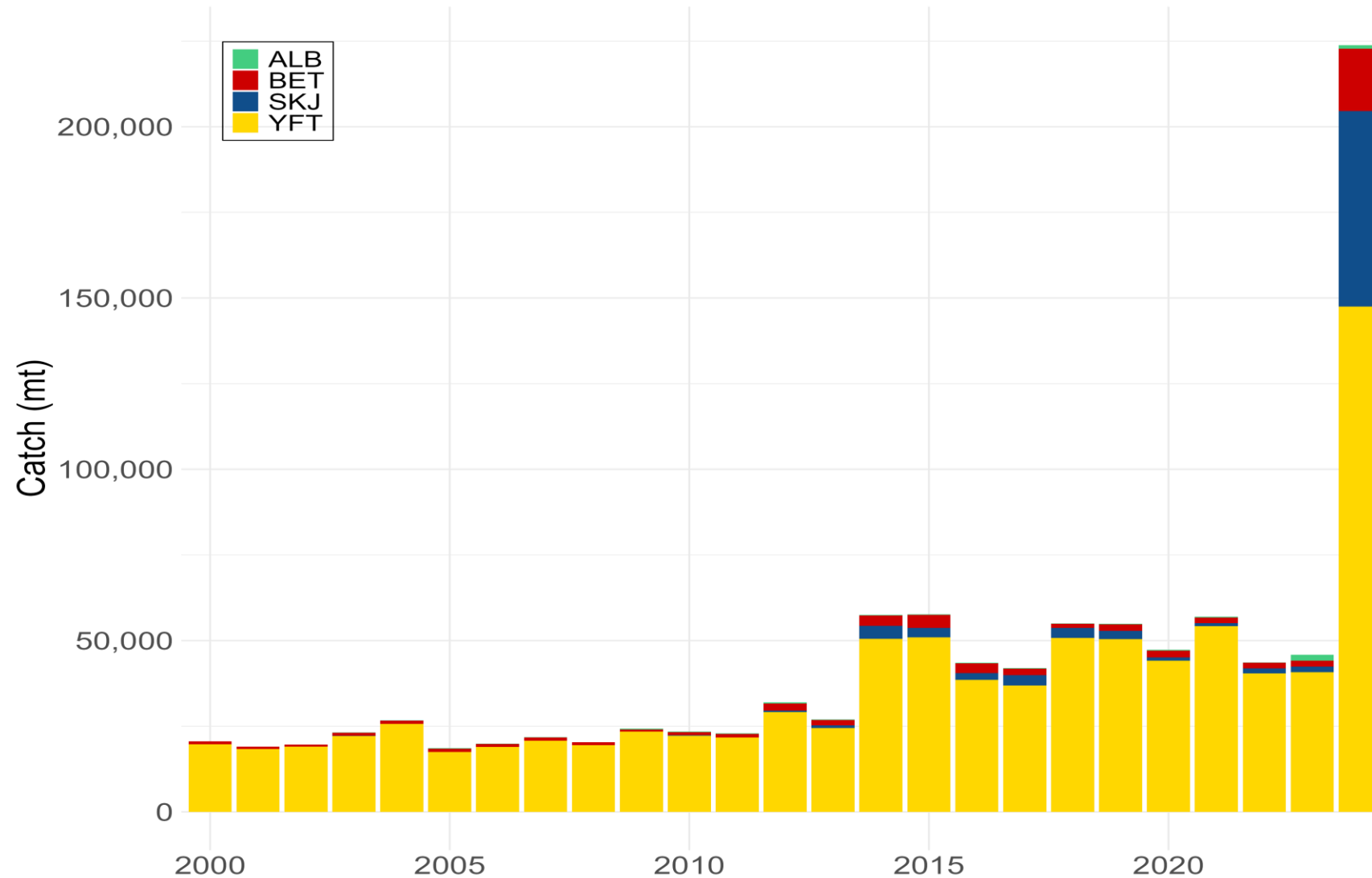
Note: Caveat: 2020-21, the impact of COVID-19 pandemic on the cost structure may have been underestimated.

In 2024, economic conditions below its 20-year average, primarily due to a decline in fish prices despite high catch rates and declining fuel costs

Recent years

- 2019-2020, conditions hovering around 20 year long term average.
- 2021 conditions worsened due to low CPUE.
- 2022, condition worsened due to escalating fuel prices from the Russia/Ukraine conflict.
- 2023, conditions improved –approaching 20 year long term average due to high CPUE and declining fuel costs.

Large-fish handline



Key highlights from 2024



Pacific
Community
Communauté
du Pacifique

Catch

- 2024 was a record year for tuna catches in the WCPFC – with notable SKJ increases
- YFT declined slightly from 2023, but relatively stable over the past decade
- BET catches show high inter-annual variability but continue to trend downward
- Provisional SP ALB catches are up from 2023, but do not yet include 2024 updates for the EPO

Catch values

- LONGLINE - US\$ 1.1 billion (20% decrease from 2023)
- PURSE SEINE - US\$ 3.4 billion (1% decrease from 2023)
- POLE & LINE - US\$ 227 million (11% decrease from 2023)

Economics conditions

- PURSE SEINE - Index remain above the 20-year average at 111
- SOUTHERN LONGLINE - Index below the 20-year average at 84
- TROPICAL LONGLINE - Index below the 20-year average at 84